

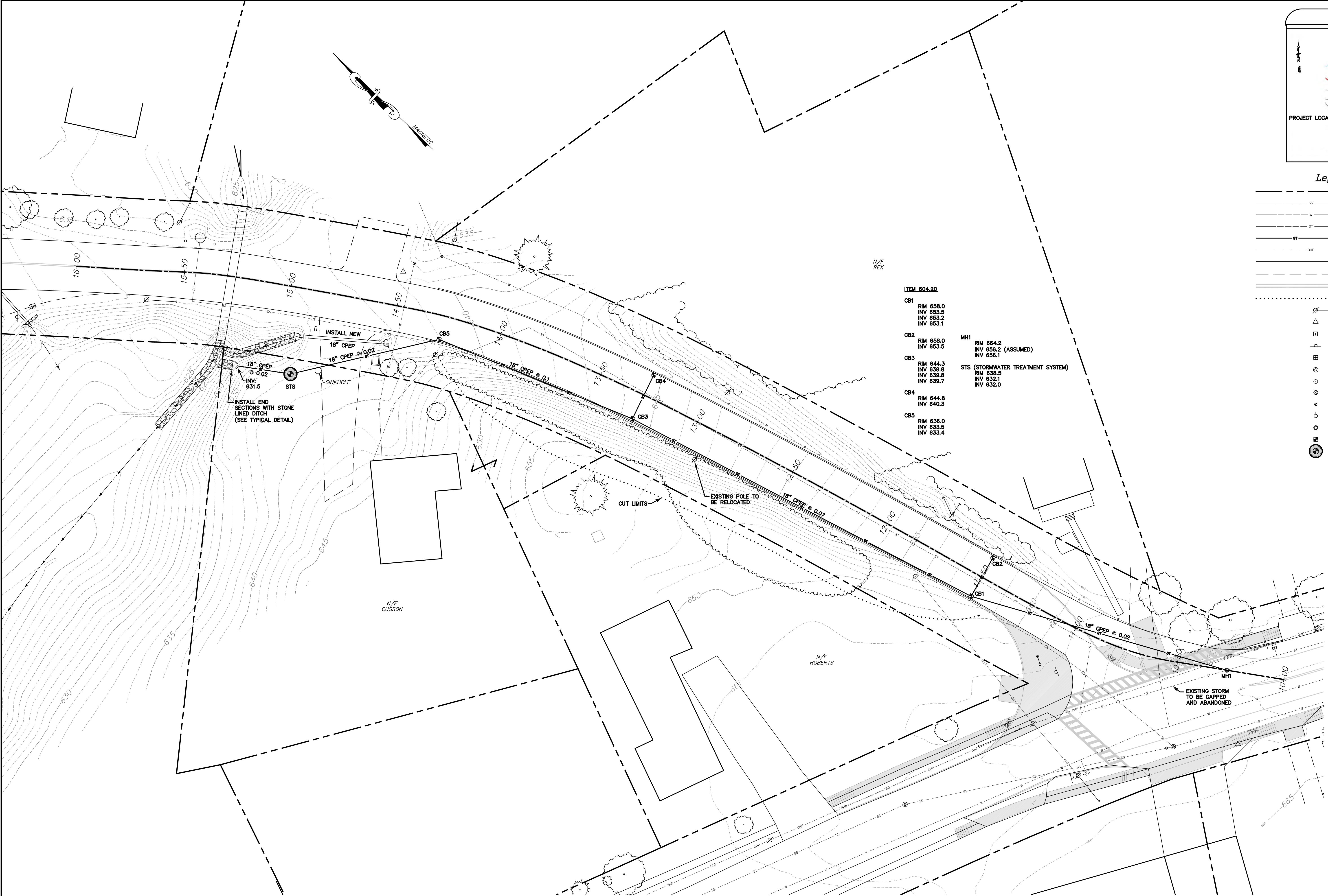
Legend

- Approximate R.O.W./Property Line
- SS Sewer Line
- Water Line
- ST Existing Storm Line
- PROPOSED STORM LINE
- Overhead Power Line
- Edge of Pavement
- Edge of Gravel
- Existing Road Markings
- CUT LIMITS
- Utility Pole w/Guy Wire
- Control Point
- Telephone Box
- Sign
- Existing Catch Basin
- Existing Manhole
- Iron Pipe Found
- Water Valve
- Curbstop
- Fire Hydrant
- PROPOSED MANHOLE
- PROPOSED CATCH BASIN
- PROPOSED STORMWATER TREATMENT SYSTEM

Notes:
Right-of-way for Johnson Street Extension was assumed to be 4 rods (66') centered on existing road.

Underground utilities are depicted from surface features and reference plans titled "Pollution Abatement Facilities" by Webster-Martin, Inc. dated 12/14/77, record drawings dated 7/13/79.

It is noted that no site assessment of hazardous or other waste materials has been performed and Summit Engineering, Inc. takes no responsibility for any materials or conditions which may exist on this site.



ITEM 604.20

CB1
RIM 658.0
INV 653.5
INV 653.2
INV 653.1

CB2
RIM 658.0
INV 653.5

CB3
RIM 644.3
INV 639.8
INV 639.7

CB4
RIM 644.8
INV 640.3

CB5
RIM 636.0
INV 633.5
INV 633.4

MH1
RIM 684.2
INV 656.2 (ASSUMED)
INV 656.1

STS (STORMWATER TREATMENT SYSTEM)
RIM 638.5
INV 632.1
INV 632.0

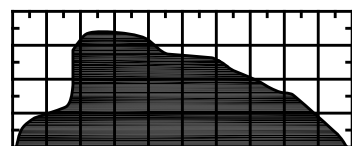
GRAPHIC SCALE



(IN FEET)
1 inch = 20 ft.

DRAFT

SURVEY
NPN/GDO
DESIGNED
DAW
DRAWN
BEG
CHECKED
DAW
SCALE
1"=20'



SUMMIT ENGINEERING, INC.
Engineers • Surveyors • Planners • Landscape Architects
1233 Shelburne Road C2
South Burlington, VT 05403
(802) 658-5588

CONCEPT PLANS

**SINKHOLE
JOHNSON ST. EXT.**

JOHNSON ST. EXTENSION
HYDE PARK, VERMONT

DATE

8/2/17

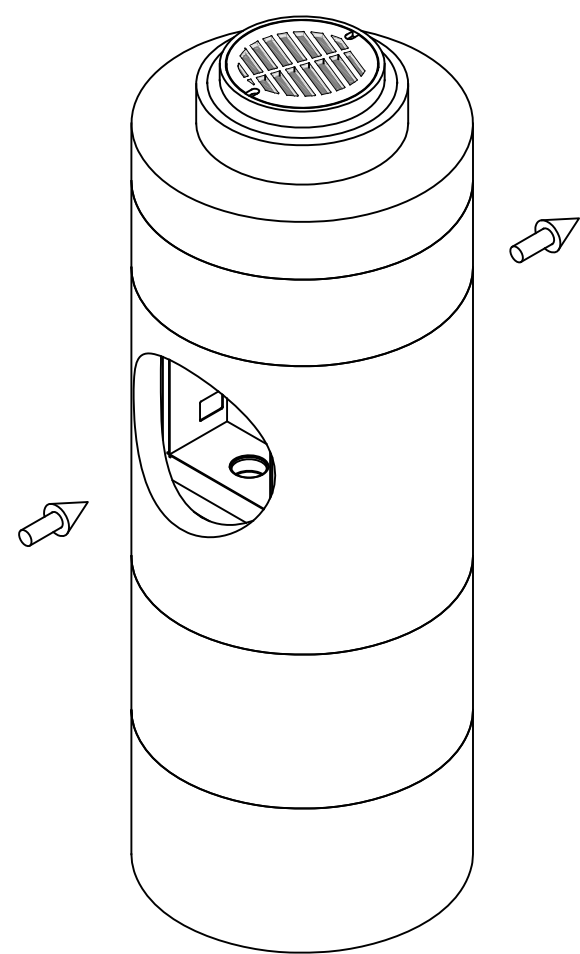
DRAWING NO.

CP1

PROJECT NO.

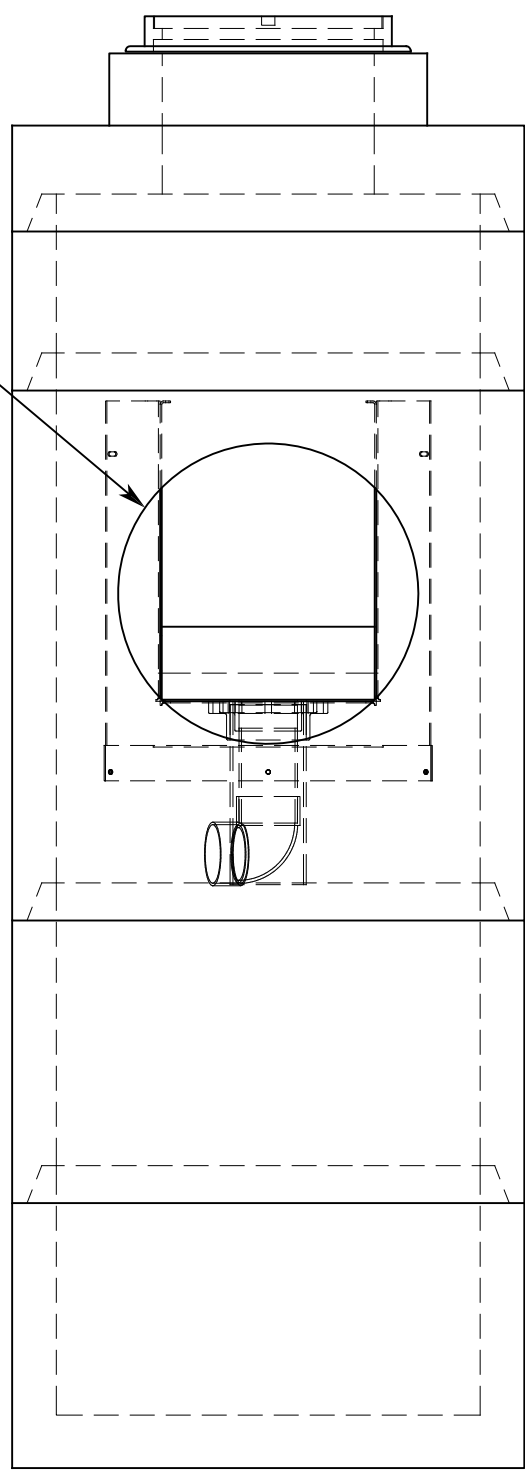
8393

©

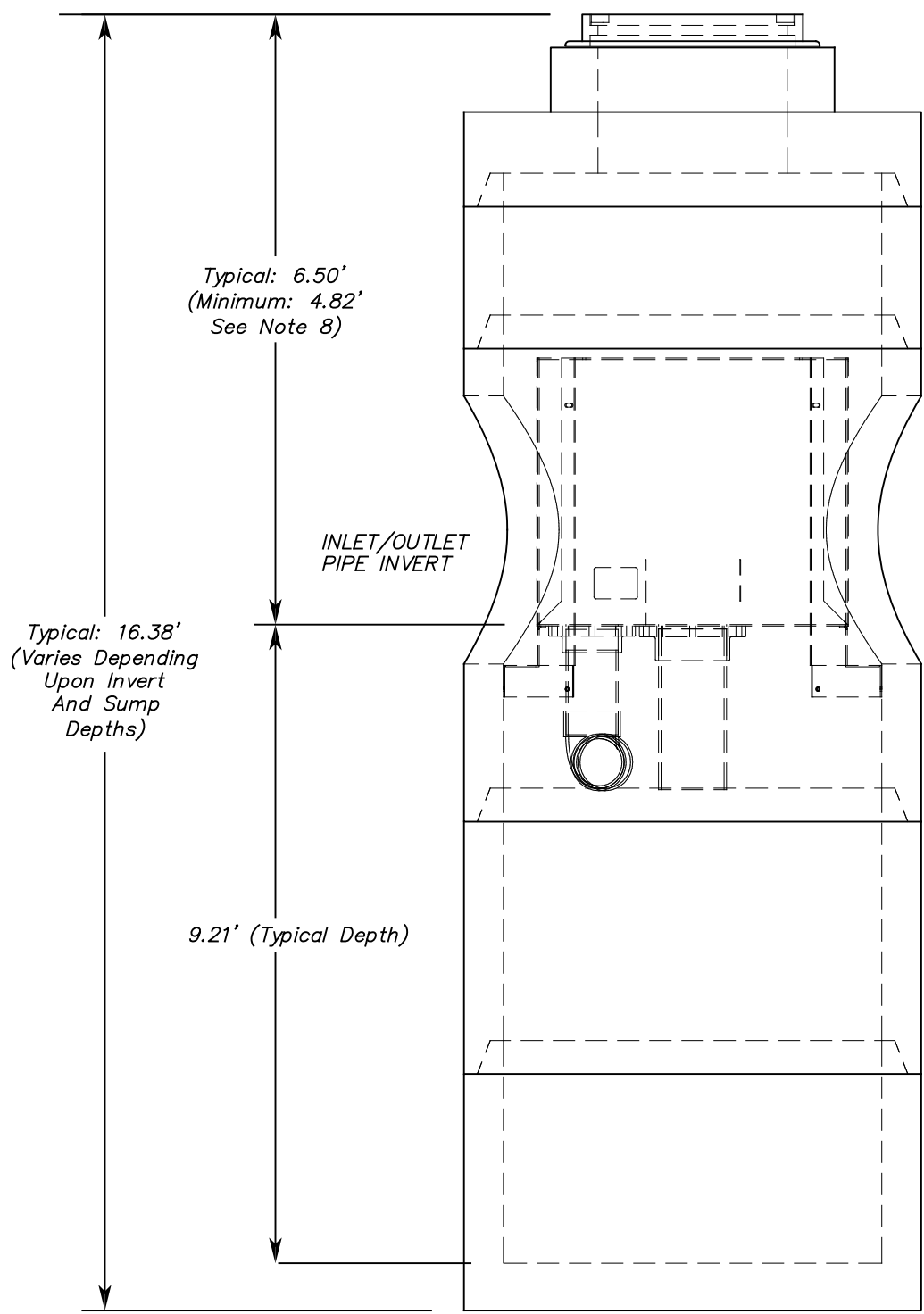


ASSEMBLED VIEW

OVERSIZED OPENING FOR
INLET/OUTLET PIPES



LEFT SIDE



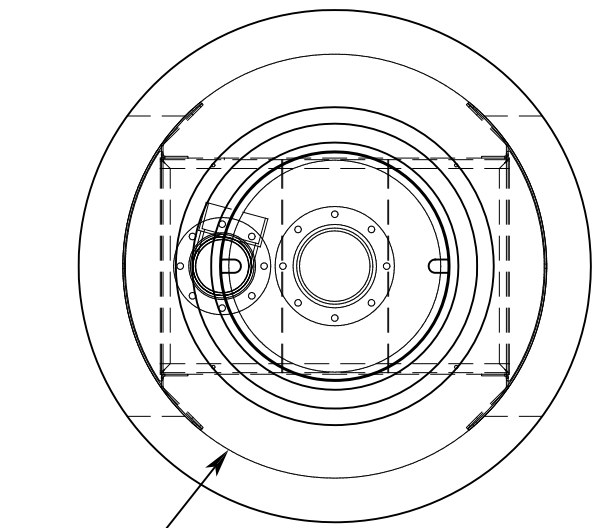
ELEVATION

STORMWATER TREATMENT SYSTEM (900.620)

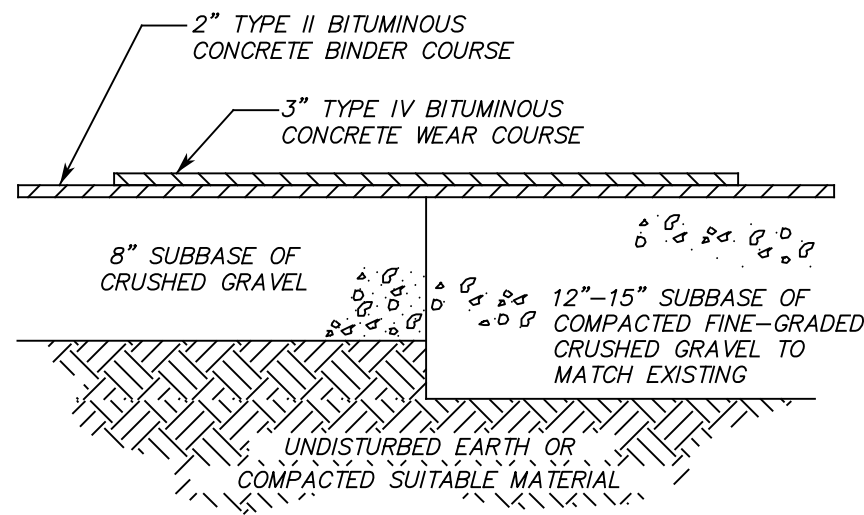
N.T.S.

NOTES:

1. STORMWATER TREATMENT SYSTEM (SWTS) SHALL REMOVE 80% OF A SEDIMENT GRADATION WITH AN AVERAGE PARTICLE SIZE OF 240 MICRONS AT THE TREATMENT FLOW RATE OF 2.20 CFS.
2. SWTS REMOVAL EFFICIENCY CLAIM SHALL BE CORROBORATED BY FULL SCALE LABORATORY TEST PERFORMANCE DATA.
3. SWTS MAINTENANCE RECOMMENDATION SHALL BE SUPPORTED BY FULL SCALE WASH-OUT TESTING.
4. SWTS SHALL PROVIDE INTERNAL BYPASS OF FLOWS THAT EXCEED THE TREATMENT FLOW RATE.
5. SWTS INVERTS IN AND OUT SHALL BE AT THE SAME ELEVATION. INLET AND OUTLET PIPES MUST BE 180° FROM EACH OTHER.
6. PURCHASER SHALL NOT BE RESPONSIBLE FOR ASSEMBLY OF INTERNAL COMPONENTS.
7. ACCESS FRAME AND COVER SUPPLIED WITH SYSTEM. SWTS SHALL ALSO HAVE A GRATED INLET COVER.
8. MINIMUM RIM TO INVERT DISTANCE MAY BE REDUCED DEPENDING UPON PIPE DIAMETER. SEE MANUFACTURER FOR SITE SPECIFIC INFORMATION.



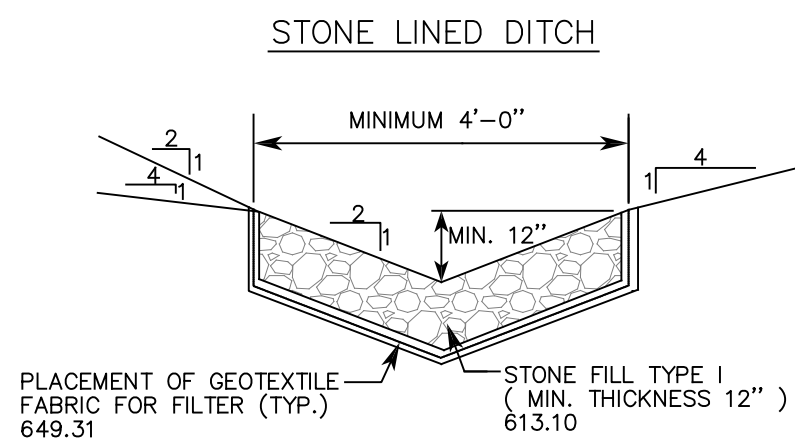
PLAN



NOTES:
SUBBASE AND BASE LAYERS SHALL BE COMPACTED TO MIN. 95%
STANDARD PROCTOR IN 6" LIFTS. ALL MATERIALS SHALL CONFORM
TO VTRANS STANDARD SPECIFICATIONS FOR CONSTRUCTION, 2011
ED. TO BE USED TO PATCH ROADWAY SECTIONS ADJACENT TO
NEW CURBING, NEW TRENCH CUTS, AND PAVED APRONS

TYPICAL PAVEMENT SECTION

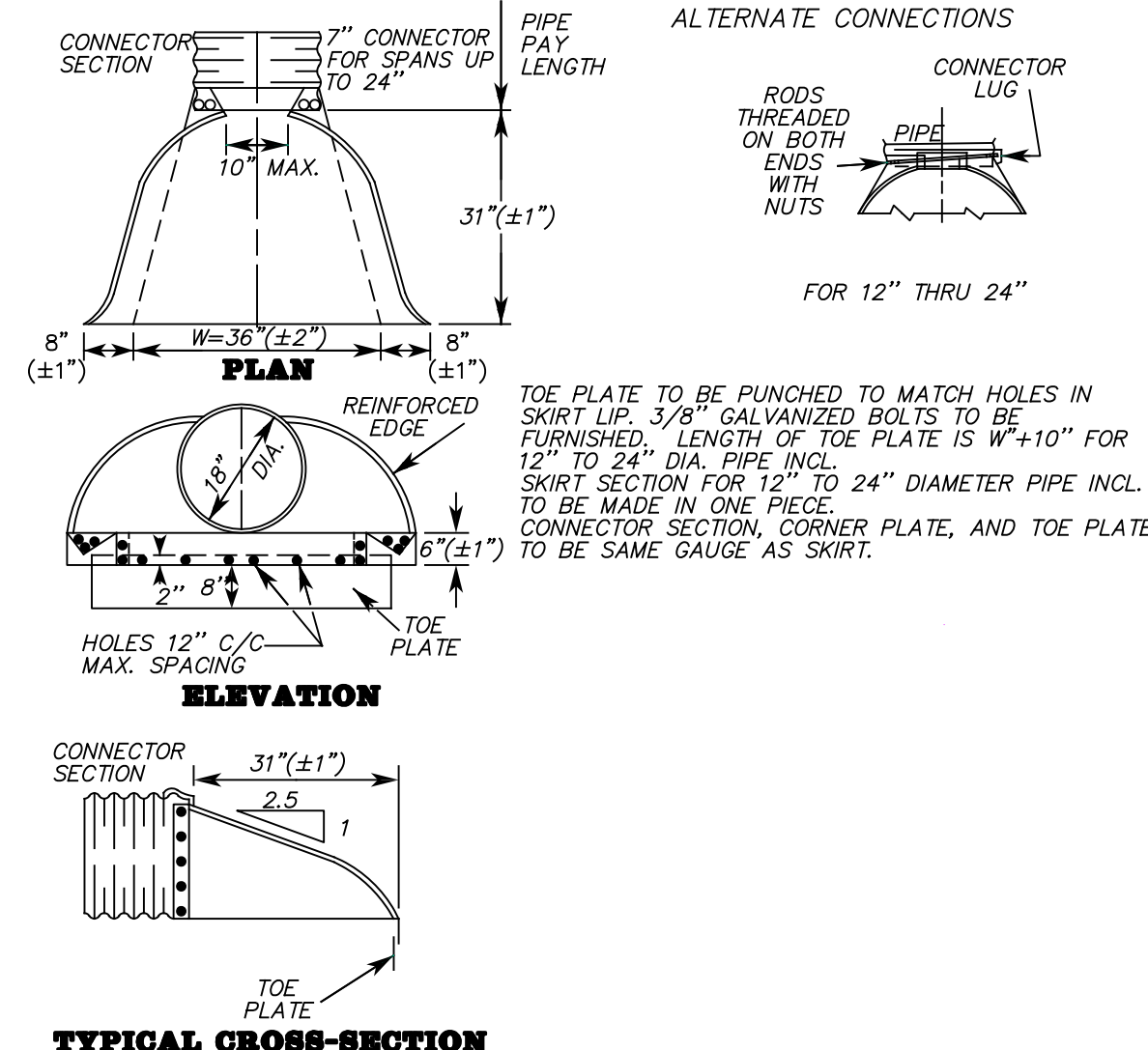
N.T.S.



EXCAVATION PAID FOR
AS COMMON EXCAVATION
203.15

STONE LINED DITCH

N.T.S.



CPEP END SECTION

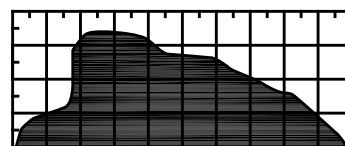
NOT TO SCALE

VTRANS STANDARDS

- | | |
|------|--|
| A-76 | STANDARDS FOR TOWN & DEVELOPMENT
ROADS |
| B-71 | DRIVE ENTRANCE |
| C-10 | CURBING |
| D-15 | PRECAST REINFORCED CONCRETE CATCH
BASIN W/ CAST IRON GRATE
CAST IRON GRATE WITH FRAME, TYPE D
(6/01/94) |
| T-1 | TEMPORARY TRAFFIC CONTROL GENERAL
NOTES |
| T-10 | CONVENTIONAL ROADS CONSTRUCTION
APPROACH SIGNING |
| T-2 | TRAFFIC SIGN GENERAL NOTES |
| T-30 | CONSTRUCTION SIGN DETAILS |

DRAFT

SURVEY NPN/GDO
DESIGNED DAW
DRAWN BEG
CHECKED DAW
SCALE



SUMMIT ENGINEERING, INC
Engineers • Surveyors • Planners • Landscape Architects
1233 Shelburne Road C2
South Burlington, VT 05403
(802) 658-5588

DETAILS

SINKHOLE
JOHNSON ST. EXT.

JOHNSON ST. EXTENSION
HYDE PARK, VERMONT

DATE
8/2/17

DRAWING NO.

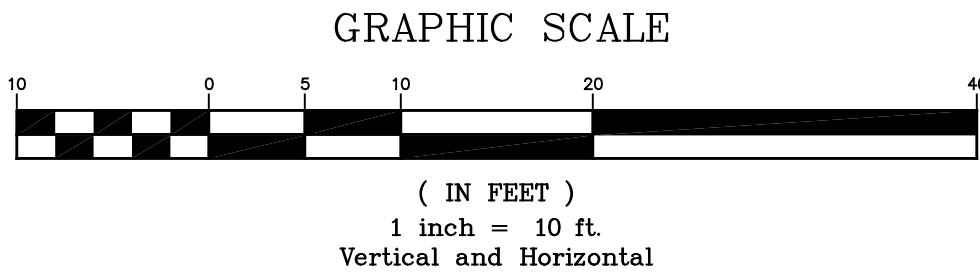
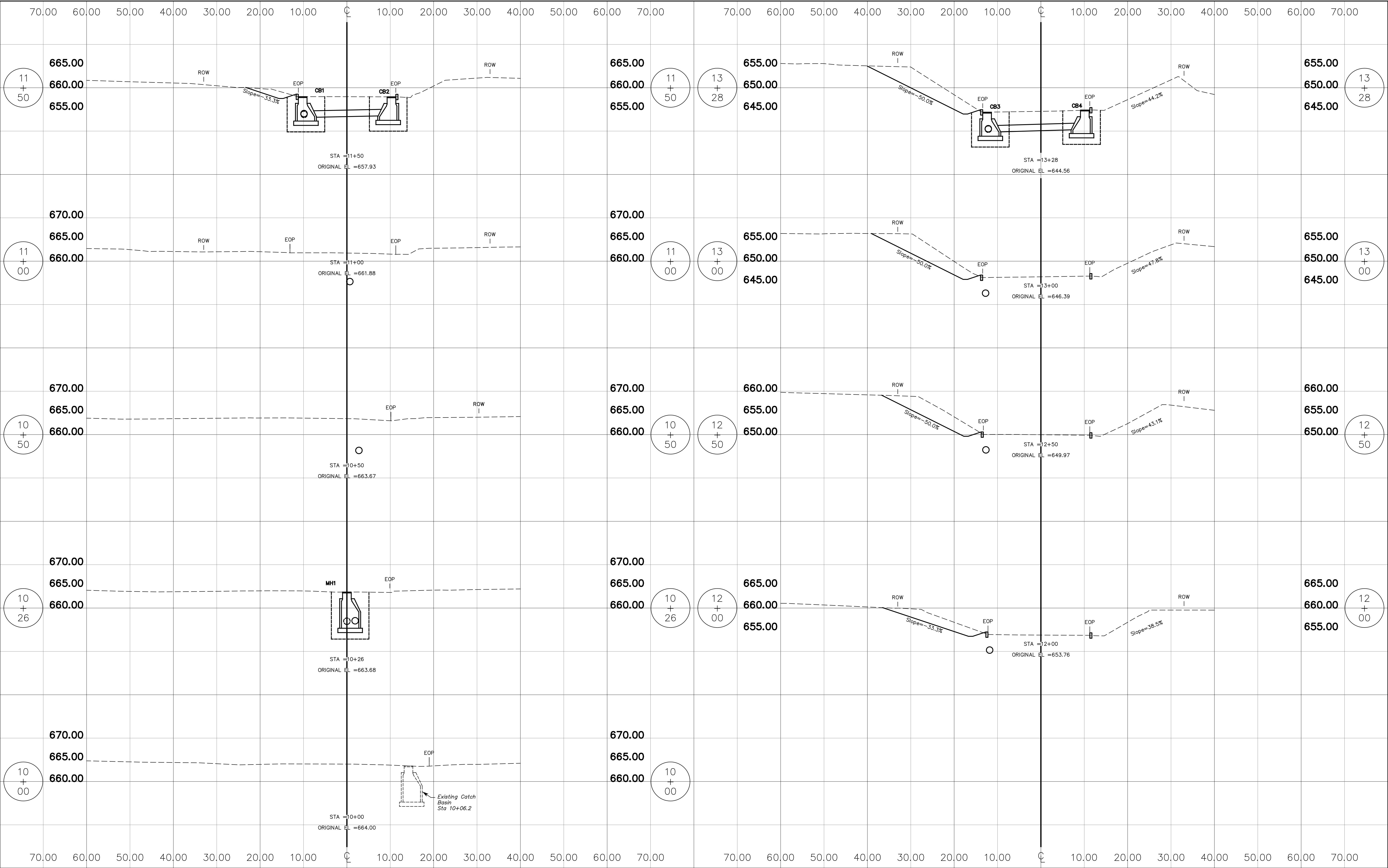
D1

PROJECT NO.

8393

©

F:\CAD\8393\SD1R00.DWG



DRAFT

SURVEY
NPN/GDO
DESIGNED
DAW
DRAWN
BEG
CHECKED
DAW
SCALE
1"=10'

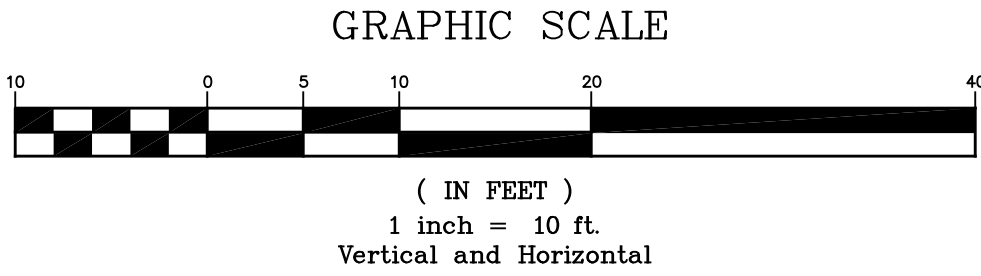
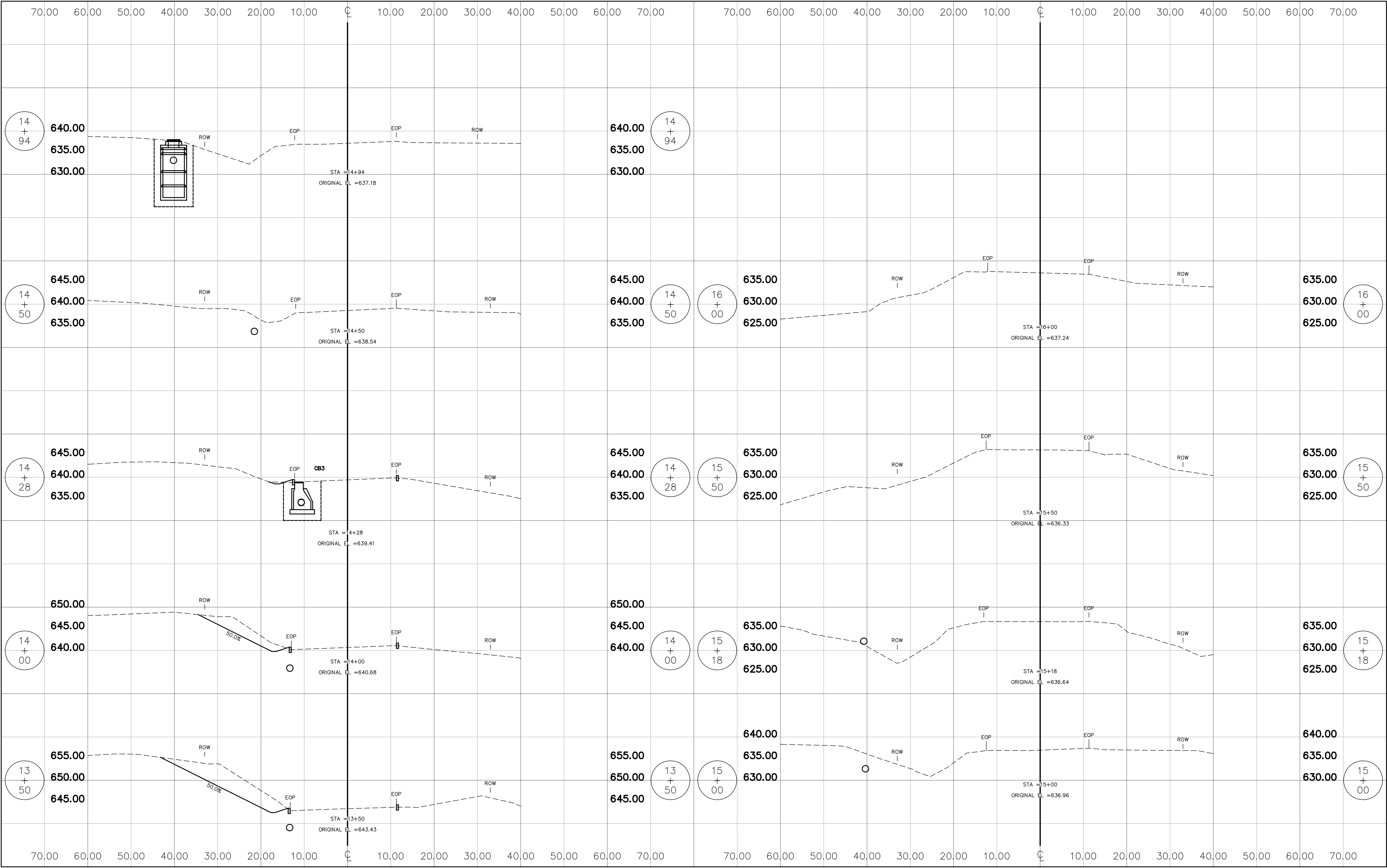
SUMMIT ENGINEERING, INC
Engineers • Surveyors • Planners • Landscape Architects
1233 Shelburne Road C2
South Burlington, VT 05403
(802) 658-5588

CROSS SECTIONS

**SINKHOLE
JOHNSON ST. EXT.**

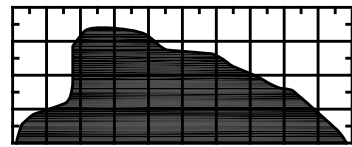
JOHNSON ST. EXTENSION
HYDE PARK, VERMONT

DATE
8/2/17
DRAWING NO.
CS1
PROJECT NO.
8393



DRAFT

SURVEY
NPN/GDO
DESIGNED
DAW
DRAWN
BEG
CHECKED
DAW
SCALE
1"=10'



SUMMIT ENGINEERING, INC
Engineers • Surveyors • Planners • Landscape Architects
1233 Shelburne Road C2
South Burlington, VT 05403
(802) 658-5588

CROSS SECTIONS

**SINKHOLE
JOHNSON ST. EXT.**

JOHNSON ST. EXTENSION
HYDE PARK, VERMONT

DATE
8/2/17

DRAWING NO.

CS2

PROJECT NO.

8393